

**Compact** inline 4 & 8 position fuse blocks have single side wire entry for tight installations spaces.

**Ignition Protected\*** when latching cover is secure for use in engine bay / combustible environments.

**Harsh Environment Design** with stainless steel self-locking hardware and optional weather-proof labels in standard or customized options.

**8037 6-Circuit Independent** input/output fuse block allows for all positions to be isolated and fused separately.

**Includes Latching Protective Cover** with integrated label recesses for easy circuit/fuse identification.



8023



8046

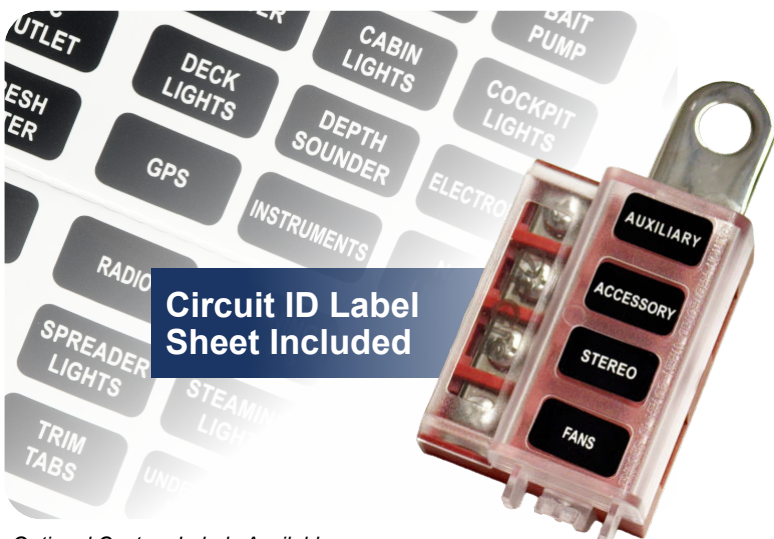


8045



8037

\* 8037 not  
ignition  
protected



**Circuit ID Label  
Sheet Included**

Optional Custom Labels Available  
(MOQ 10pcs of Label Sheets 40 Labels per sheet)  
Contact sales@egismobile.com for more info.

**Marine Grade Construction:** Designed with high-temperature materials and stainless-steel self-locking hardware to allow mounting anywhere on vehicle or vessel.



**Supports SAE & ABYC Circuit Protection Standards** for thermal/short circuit events.

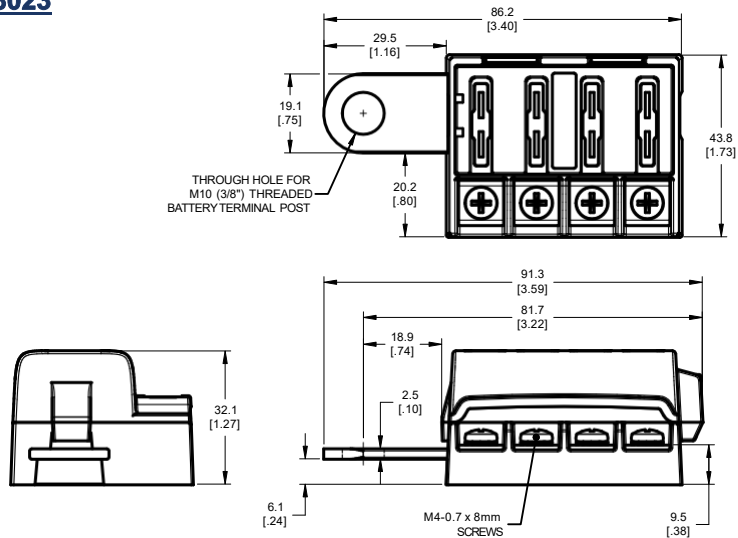


**Protects Branch Circuits** by accepting ATO style fuses ranging from 1 through 40 Amps.

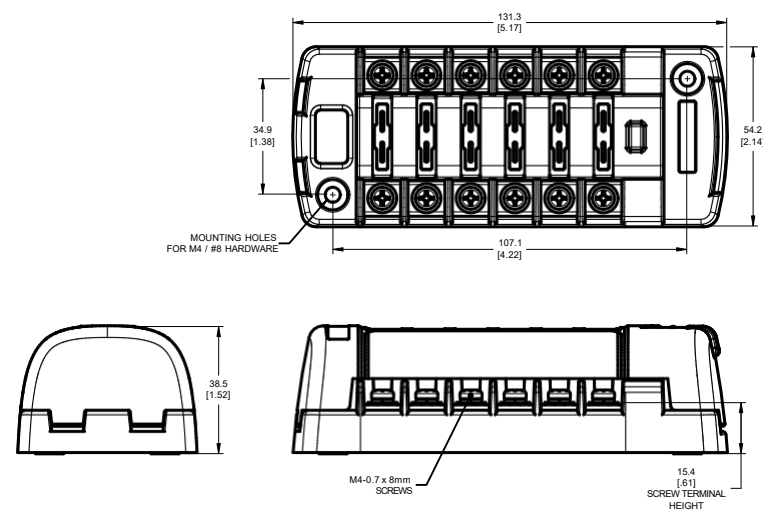


**4 Year Industry Leading Warranty**

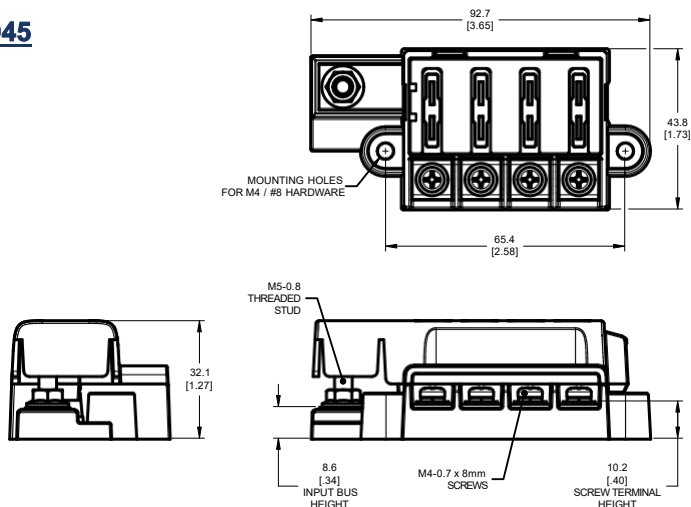
**8023**



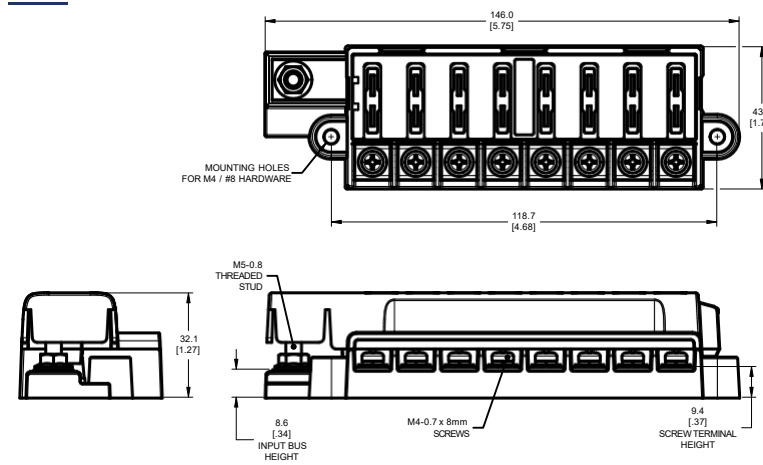
**8037**



**8045**



**8046**



**Specifications**

|   |                      |
|---|----------------------|
| Nominal Voltage                               | 12-48 Vdc            |
| Maximum Voltage                               | 60 Vdc*              |
| Maximum Current (Entire Block)                | 100 Amps             |
| Maximum Current Per Circuit                   | 30 Amps              |
| Maximum Output Terminal Size                  | 10 AWG               |
| Input Cable Size To Meet Ratings (8045, 8046) | 6 AWG                |
| Maximum Input Terminal Size (8045, 8046)      | 2 AWG                |
| Hardware Material                             | 18-8 Stainless Steel |
| Input Terminal Nut Size (8045, 8046)          | M5-0.8               |
| Output Screw Size                             | M4-0.7 x 8mm         |
| Input Terminal Torque (8045, 8046)            | 1.70 N-m (15 in-lb)  |
| Output Screw Torque                           | 1.13 N-m (10 in-lb)  |
| Input Ring Terminal Size (8045, 8046)         | M5 / #10             |
| Input Terminal Stud Size (8023)               | M10 / 3/8"           |
| Output Ring Terminal Size                     | M4 / #8              |

\* Dependent on fuse voltage rating

**Part Numbers**

|  | Retail | Bulk  |
|--|--------|-------|
| RT Battery Terminal Mount Fuse Block 4 Circuit | 8023   | 8023B |
| RT Fuse Block 6 Independent Circuits w/Cover   | 8037   | 8037B |
| RT Fuse Block 4 Circuits w/Cover               | 8045   | 8045B |
| RT Fuse Block 8 Circuits w/Cover               | 8046   | 8046B |

**Related Part Numbers**

|                                    | Retail | Bulk  |
|------------------------------------|--------|-------|
| RT Fuse Block, 6 Circuit w/Ground  | 8025   | 8025B |
| RT Fuse Block 12 Circuit w/Ground  | 8026   | 8026B |
| RT Fuse Block, 6 Circuit           | 8028   | 8028B |
| RT Fuse Block 12 Circuit           | 8029   | 8029B |
| RT 12 Circuit Ground Block         | 8030   | 8030B |
| RT Fuse Block, 18 Circuit w/Ground | 8031   | 8031B |
| RT Fuse Block, 18 Circuit          | 8032   | 8032B |

Contact factory for custom label sheet configurations of weather resistant labels design to provide professional finish appearance to installations.



www.egismobile.com  
360.768.1211  
Bellingham, WA U.S.A

