



**TAA**  
COMPLIANT

# BOne

Impressive Capability with Incredible Value

|| Taking the best parts of the beloved **Surf SOHO** & **Balance 20** and putting them into one capable device. ||

Improved  
**Speeds &  
Wi-Fi**



**Enterprise  
Software  
Features**

Separate devices  
into VLANs  
**Multiple SSIDs**  
WLAN Controller

**Robust &  
Reliable  
Connectivity**



Great  
**Value**



## Easy Integration with **Starlink**

- Bond multiple Starlink connections together
- Load Balance your Starlink with other internet services (5G/LTE, Cable, Fiber, FWA)
- Optimize your network with additional features requested specifically by Starlink



## Made for **Fixed Wireless Access (FWA)**

- Designed for use with MSP 5G/LTE Gateway devices
  - | Bond various FWA together (AT&T / T-Mobile / Verizon)
  - | Load Balance different internet sources (Cable, Fiber, 5G/LTE)
- Tether your phone with Wi-Fi WAN or USB



## Long Term **Support**

- Firmware is constantly updated to patch vulnerabilities and improve performance
- Futureproof your network as Peplink never ends support for older devices

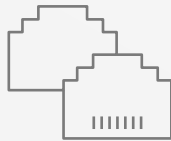




## A Game Changer with Peplink App

- With a valid PrimeCare subscription, take advantage of all of SpeedFusion features without the need for an advanced network setup
- Easy to set up and use with our Companion App

## Key B One Benefits



### Dual WAN

architecture keeps you connected even when one of your Internet lines goes down



### SpeedFusion

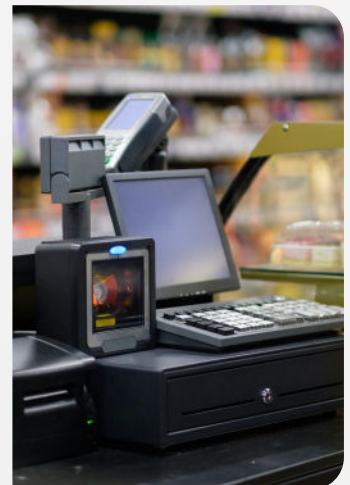
technology seamlessly bonds multiple Internet connections into one more reliable Internet feed

## Use Cases

### SOHO



### RETAIL





## Specifications

<b>WAN Interface</b>	2x 10/100/1000M Ethernet 1x USB-C Interface	<b>Antenna Connectors</b>	2x RP-SMA Wi-Fi Antenna Connectors
<b>LAN Interface</b>	4x 10/100/1000M Ethernet	<b>Power Input</b>	Power Port: 10V – 30V DC AC Adapter: AC Input 100V–240V / DC Output 12V
<b>Wi-Fi Interface</b>	Simultaneous Dual-Band (2.4GHz / 5GHz) Wi-Fi 6, 2X2 MIMO Wi-Fi WAN and/or AP	<b>Power Consumption</b>	6W (nominal), 15W (max. without USB-C output <sup>5</sup> )
<b>SpeedFusion Features</b>	Hot Failover <sup>2</sup> / Smoothing <sup>2</sup> / Bandwidth Bonding <sup>2</sup>	<b>Dimension</b>	10.31 x 6.33 x 1.31 inches / 262 x 161 x 33.5mm
<b>Number of SpeedFusion VPN Peers</b>	2 / 5 / 10 / 20 <sup>3</sup>	<b>Weight</b>	1.6 pounds / 727 grams
<b>Router Throughput</b>	1Gbps	<b>Operating Temperature</b>	-40° – 113°F / -40° – 45°C
<b>SpeedFusion VPN Throughput</b>		<b>Humidity</b>	10% – 90% (non-condensing)
- No Encryption	400 Mbps	<b>Certification</b>	FCC, CE, RoHS
- 256-bit AES	200 Mbps	<b>Package Content</b>	1x B One 2x Dual Band Wi-Fi Antennas 1x 12V 3A 4 Pin Power Supply (ACW-672)
<b>Recommended Users</b>	1-150	<b>Warranty</b>	1-Year Limited Warranty
<b>AP Controller</b>	Standard		
<b>Maximum Number of AP Supported</b>	30 / 50 <sup>4</sup>		

<sup>1</sup> Requires LIC-DOC license and firmware 8.5.2 or above to enable Docker.

<sup>2</sup> Requires a PrimeCare subscription, complimentary for the first year.

<sup>3</sup> 5 SpeedFusion VPN Peers are enabled with PrimeCare Subscription. 10 or 20 SpeedFusion VPN peers can be enabled with software license (PVN-LC-10 and PVN-LC-20).

<sup>4</sup> Available with licence add-on (AP-LC-50).

<sup>5</sup> USB-C Output : 5V at 2A can be delivered to power the MAX Adapter or other USB dongles for USB WAN.

Specifications are subject to change without notice.

## Ordering Information

---

Product Code	Regions
B-ONE-T-PRM	Global

## Featured Add-on

---

Product Code	Description
PRM-A-1Y / PCP-A-1Y	PrimeCare A / PrimeCare+ A (1-Year)
PRM-A-2Y / PCP-A-2Y	PrimeCare A / PrimeCare+ A (2-Year)
PRM-A-4Y / PCP-A-4Y	PrimeCare A / PrimeCare+ A (4-Year)
ACW-791	Peplink 4-Pin to USB-C Power Cable
ACW-634	10ft DC Power Cable
ACW-341	Dual-Band Indoor Wi-Fi Omni Antenna in Black (RP-SMA)

## Deep Dive

<b>Software</b>	Pepwave MAX Firmware	<b>Networking</b>	NAT and IP Forwarding Static Routes Port Forwarding Many to One, One to One NAT NAT Pool SIP ALG, H.323 ALG UPnP, NAT-PMP
<b>WAN</b>	Support for PPPoE, Static IP, DHCP WAN Link Health Check Bandwidth Allowance Monitor Support for Dynamic DNS services		
<b>LAN</b>	DHCP Server for LAN Clients Extended DHCP Option DHCP Reservation DNS Proxy for LAN Clients VLAN on LAN Support	<b>AP Controller</b>	Support for Pepwave AP Series Auto AP Discovery Auto AP Firmware Management AP Profile Configuration Wi-Fi Usage Statistics
<b>Security</b>	Stateful Firewall DoS Prevention Web Blocking	<b>Captive Portal Support</b>	Support for Wired and Wireless LAN clients Support RADIUS Authentication Time and Usage Quotas on Open Access Mode Built-in Customizable Splash Page
<b>Complete VPN Solution</b>	SpeedFusion VPN/SpeedFusion <ul style="list-style-type: none"> <li>• Hot Failover</li> <li>• Site-to-Site VPN</li> <li>• 256-bit AES Encryption</li> <li>• Pre-shared Key Authentication</li> <li>• Dynamic Routing</li> </ul> X.509 Certificate Support IPsec VPN (Network-to-Network)	<b>Device Management</b>	Web Administrative Interface Command Line Interface InControl Cloud Management Email Notification Active Client & Session Lists Bandwidth Usage Statistics Syslog Service SNMP v1, v2c and v3
<b>Advanced QoS</b>	Individual Bandwidth Limit Application Prioritization <ul style="list-style-type: none"> <li>• SIP, HTTPS, VPN QoS</li> <li>• Custom Application QoS</li> </ul>		